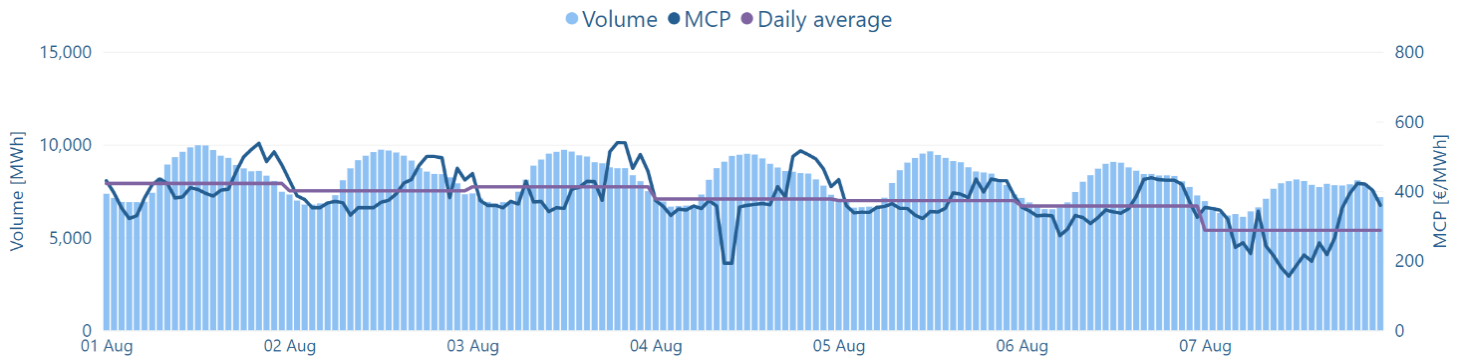


**MCP**  
**375.67** €/MWh

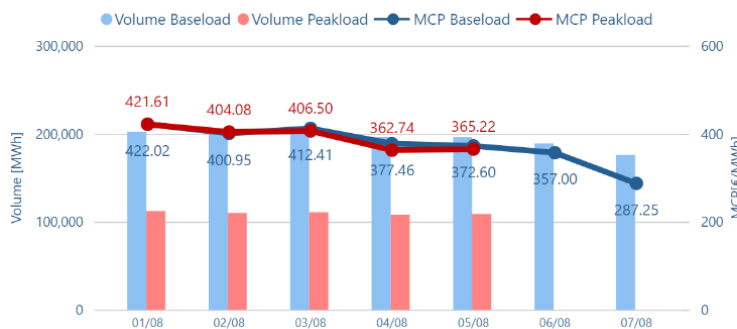
**Volume**  
**1,360** GWh

**Value**  
**513.7** M€

## Hourly MCP & Volume



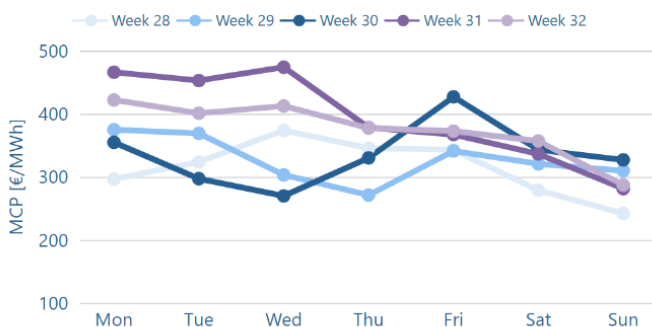
## Daily MCP & Volume



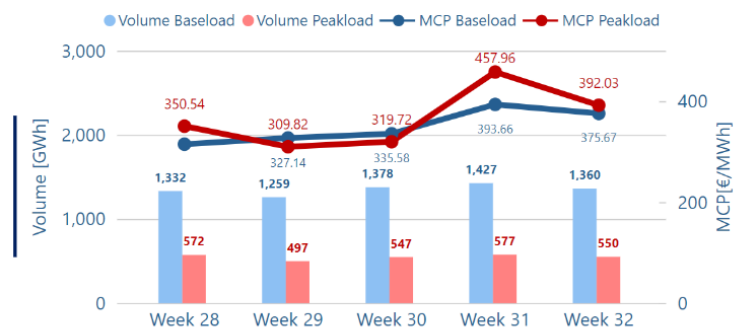
## Data table

| Delivery Date | MCP BL [€/MWh] | MCP PL [€/MWh] | Volume BL [MWh] | Volume PL [MWh] |
|---------------|----------------|----------------|-----------------|-----------------|
| 01/08         | 422.02         | 421.61         | 202,414         | 112,255         |
| 02/08         | 400.95         | 404.08         | 198,924         | 110,104         |
| 03/08         | 412.41         | 406.5          | 201,133         | 110,886         |
| 04/08         | 377.46         | 362.74         | 196,225         | 108,220         |
| 05/08         | 372.60         | 365.22         | 196,125         | 108,840         |
| 06/08         | 357.00         |                | 189,021         |                 |
| 07/08         | 287.25         |                | 175,975         |                 |

## MCP per Weekday



## Weekly MCP & Volume



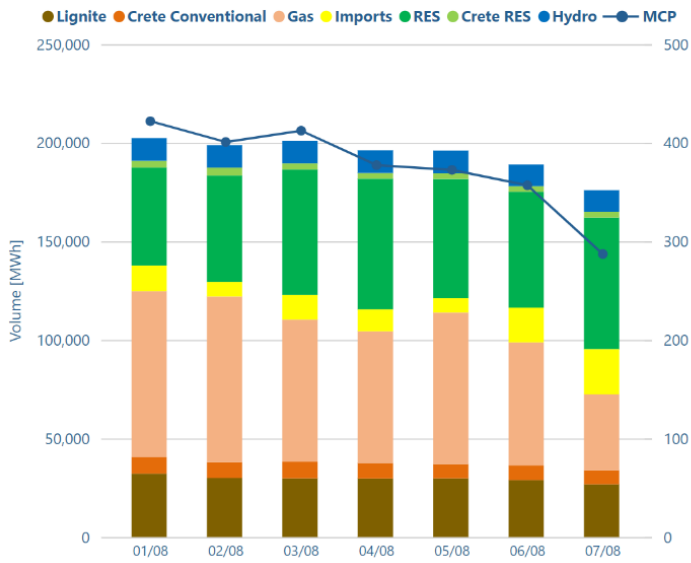
Day Ahead Electricity Market-Greek Bidding Zone

Week 32

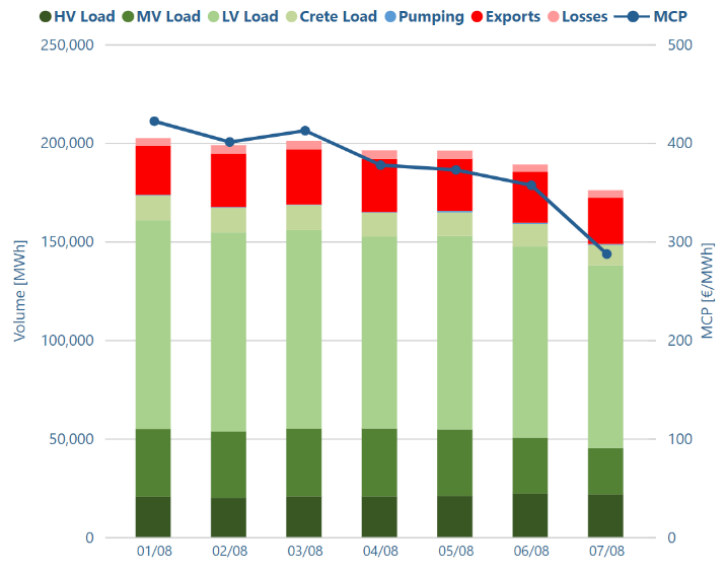
01/08/2022

07/08/2022

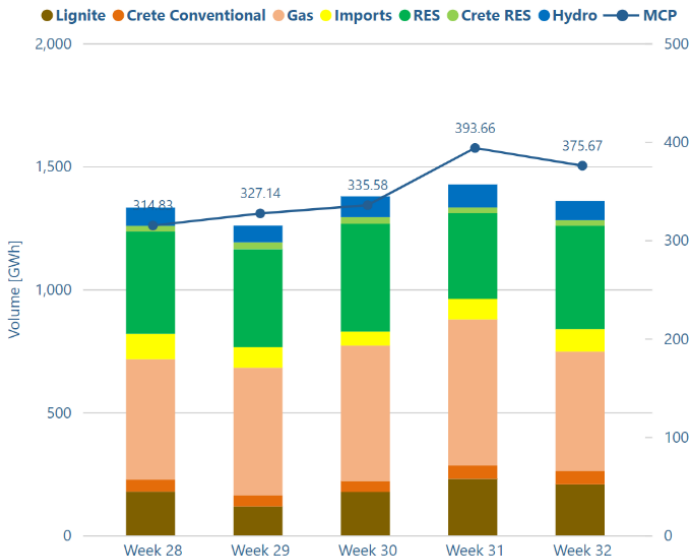
## Daily Supply Mix



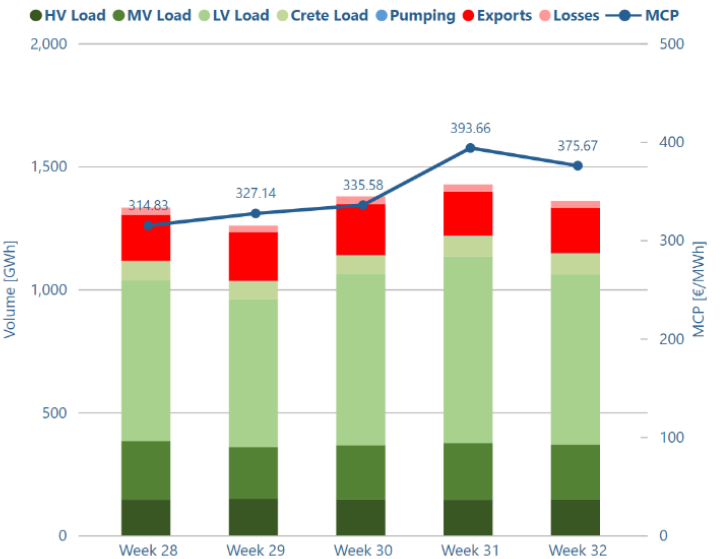
## Daily Demand Mix



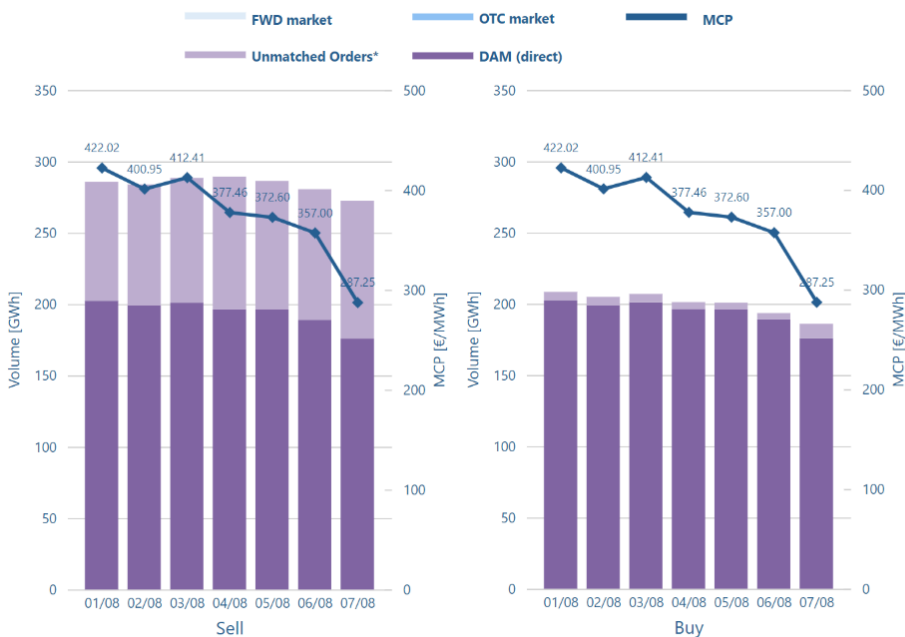
## Weekly Supply Mix



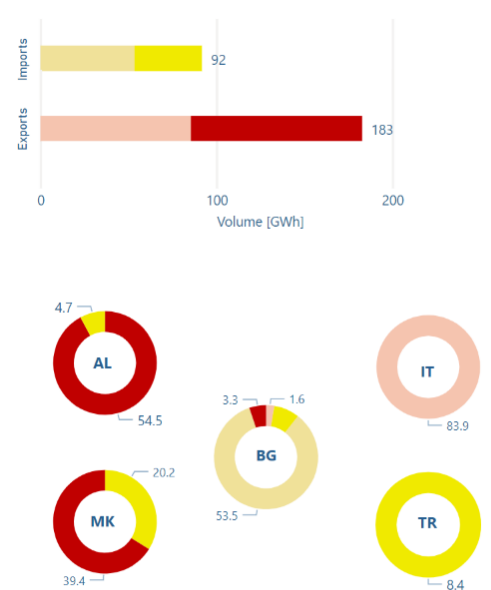
## Weekly Demand Mix



## Unmatched orders & traded volume



## Cross Borders Volumes

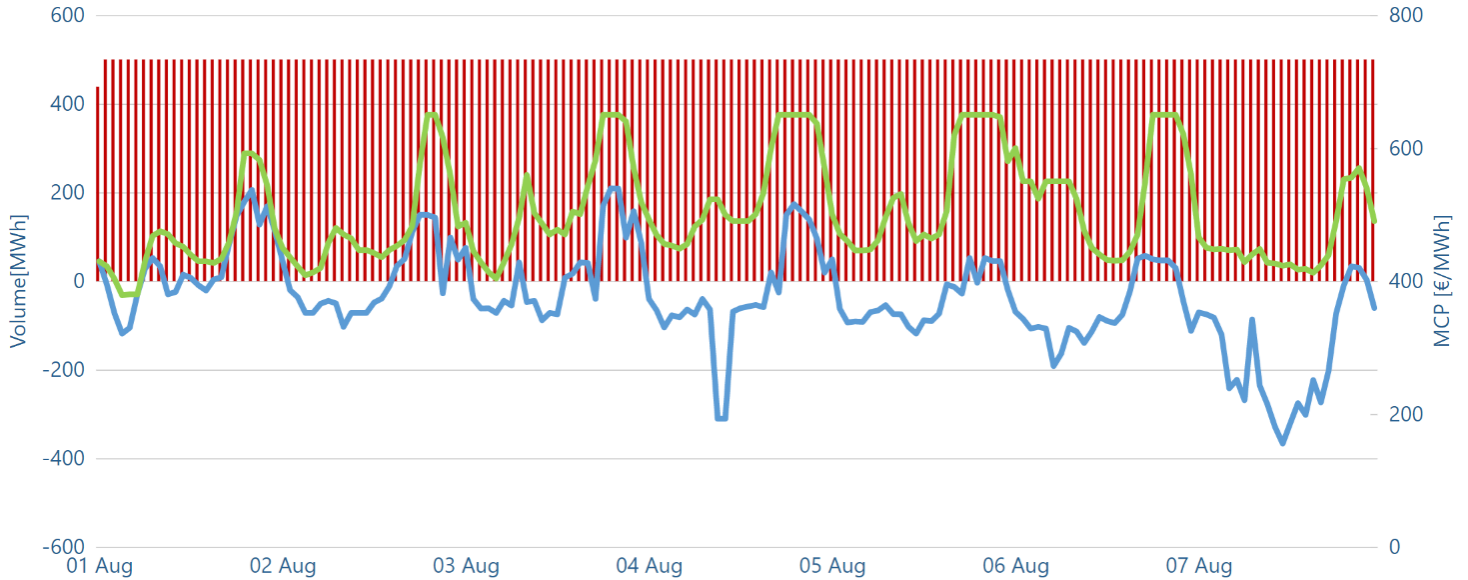


\*The unmatched orders include all orders that have not been included in the algorithm (excluding block orders for sell side)

Exports-Implicit Allocation Imports-Implicit Allocation

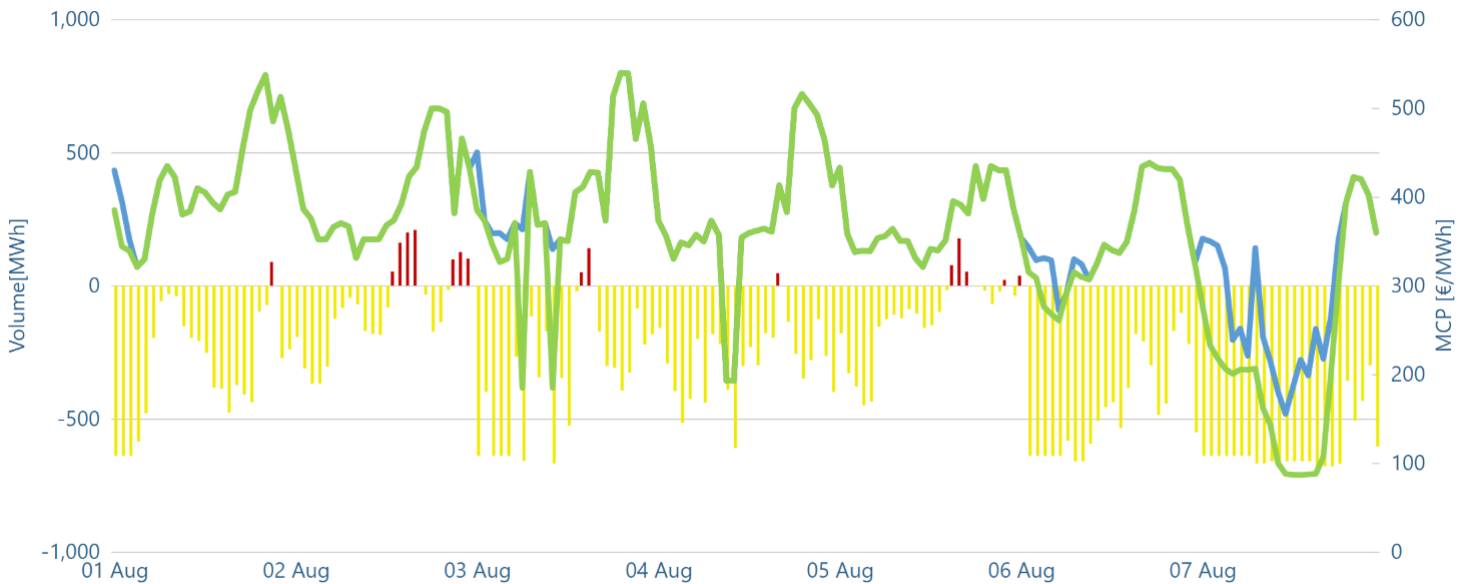
## Market Coupling Cross Border Flow

● Export ● Import ● GR MCP ● IT (SUD BZ) MCP\*



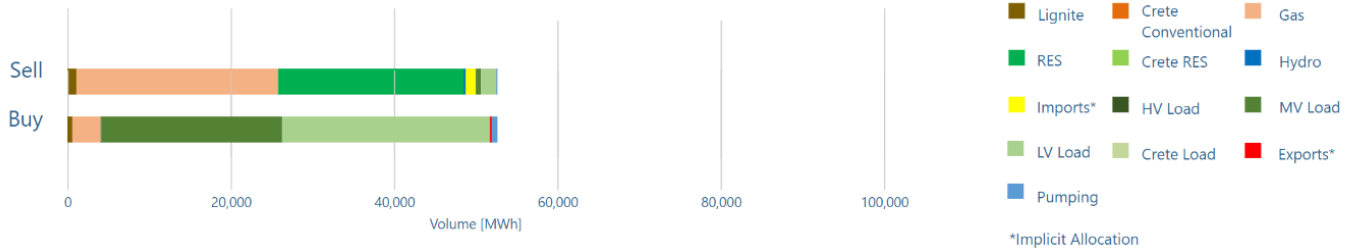
\*Datasource for IT (SUD BZ) MCP: <http://www.mercatoelettrico.org/En/Esiti/MGP/EsitiMGP.aspx>

● Export ● Import ● GR MCP ● BG MCP\*

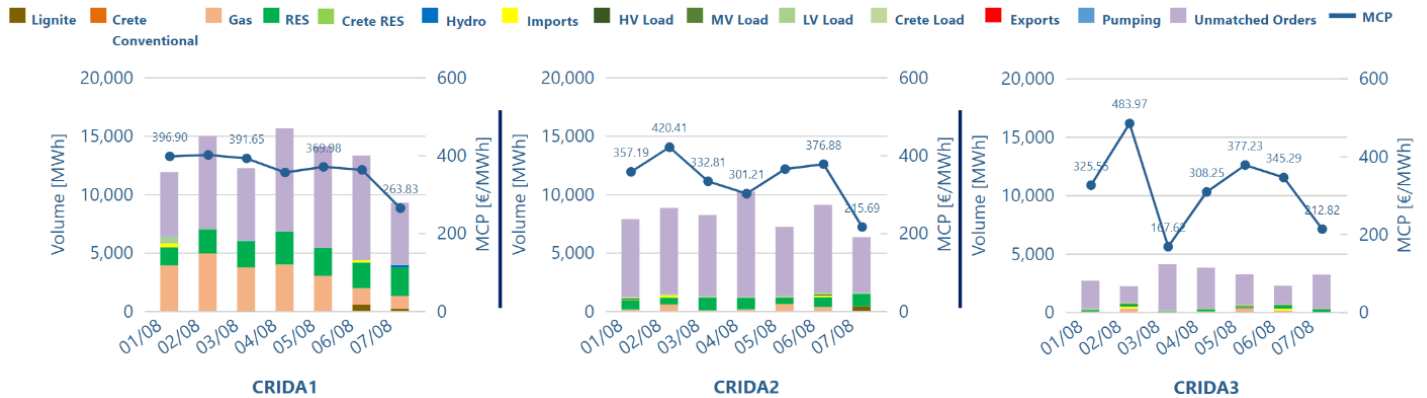


\*Datasource for BG MCP: <https://ibex.bg/markets/dam/dam-market-segment/>

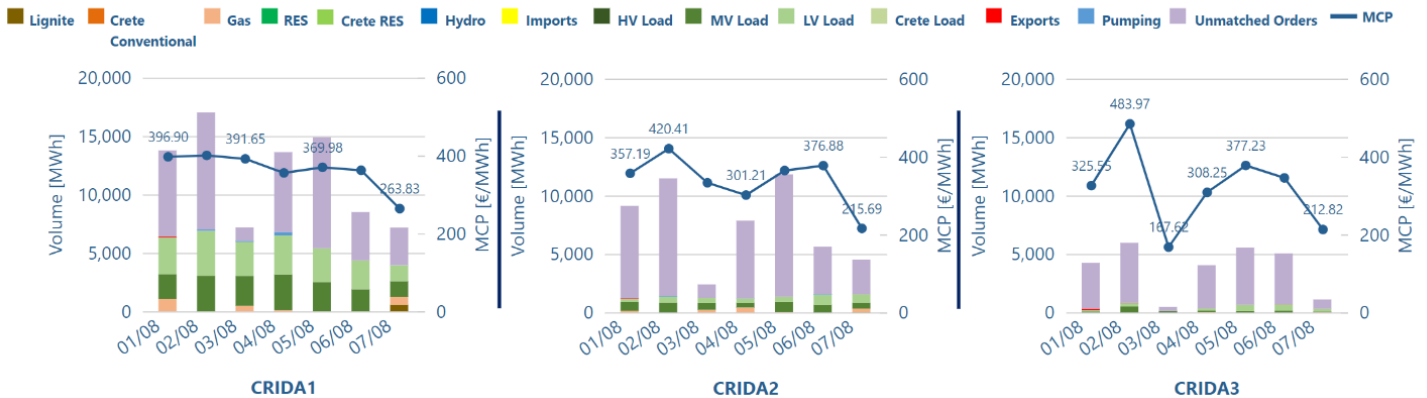
## Aggregated traded volume



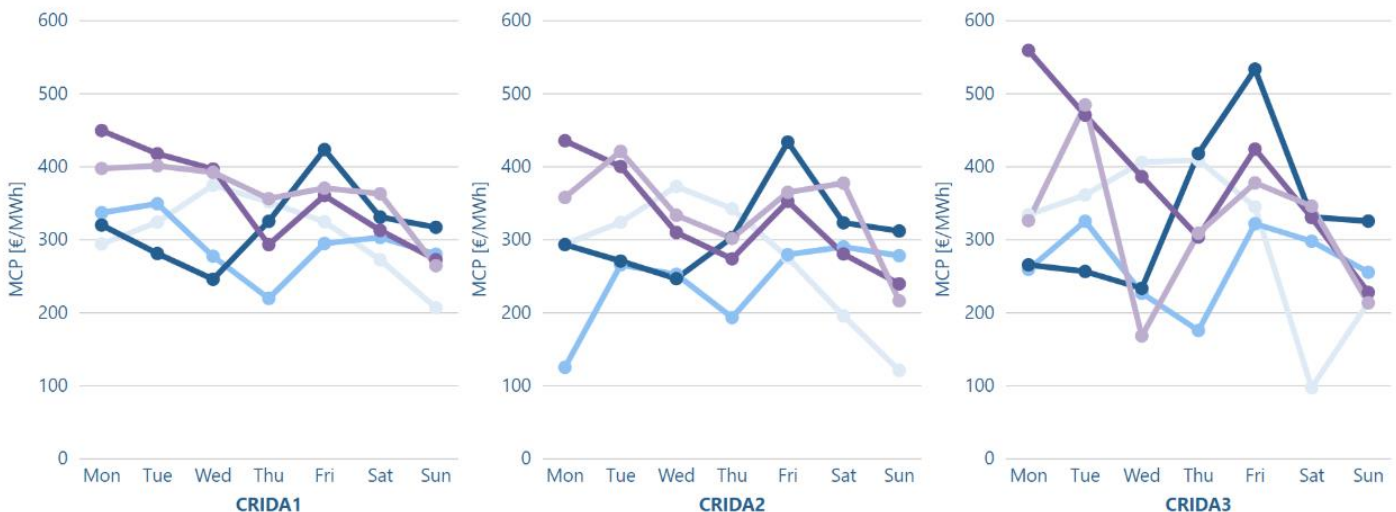
## MCP, Volume & unmatched orders for Sell Side

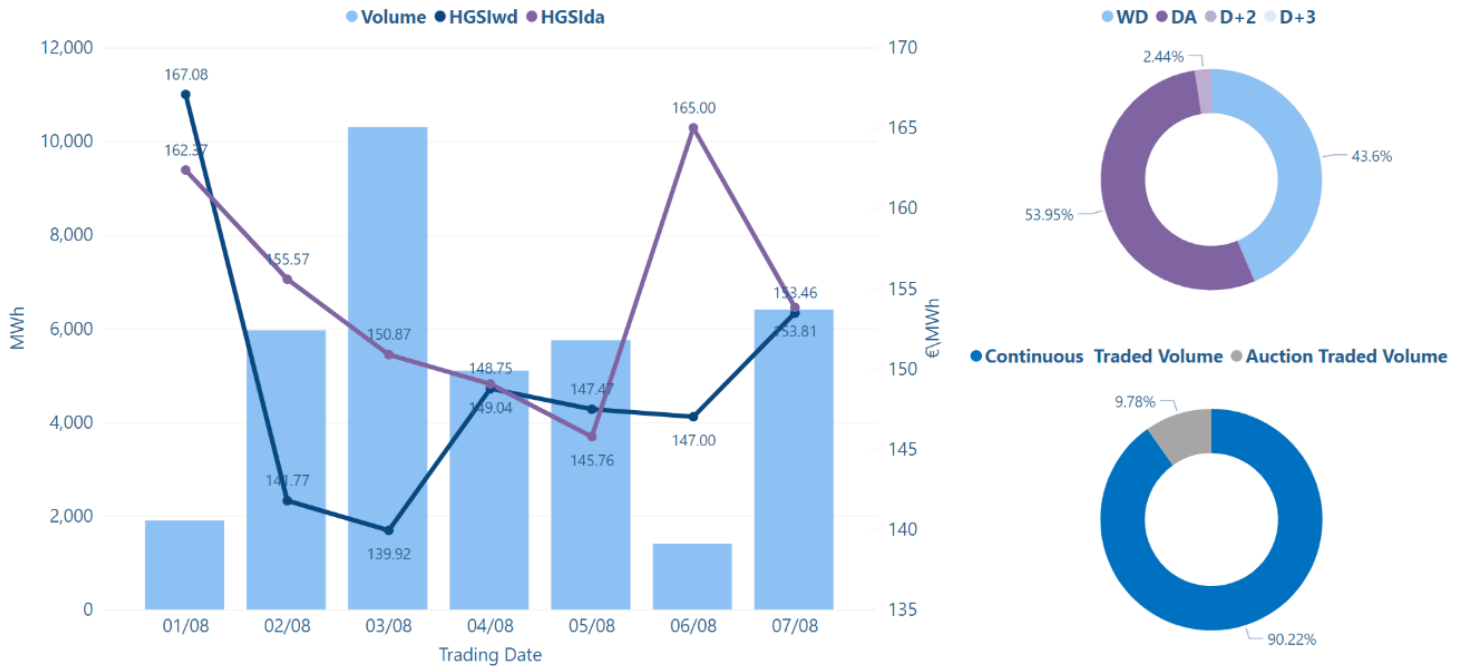


## MCP, Volume & unmatched orders for Buy Side



Week 28 Week 29 Week 30 Week 31 Week 32





## Volume, Closing, Min & Max Prices per Trading Date

